



## Installing the TSI Camera

Install the software and restart your computer before connection the TSI Camera.

If you have already plugged the camera into the computer, please unplug it before installing the software.

- 1) Insert the CD-ROM into your CD-ROM drive.
- 2) Auto run will display the Velocity Connect installation screen. Click **Install\***.
- 3) On the install window, click **Continue**.
- 4) Follow the instructions to finish the driver installation.\*\*

Restart your computer for the new hardware and settings to take effect

- 5) After your computer restarts, you may plug your camera into the USB port.
- Note: If auto run does not start, choose RUN from the Windows Start Menu. Assuming your CD-ROM is drive is the D Drive, type “D:\AUTORUN” in the RUN dialog box. If the Auto run still does not start, consult your computer manual or manufacture to locate the CD-ROM drive.

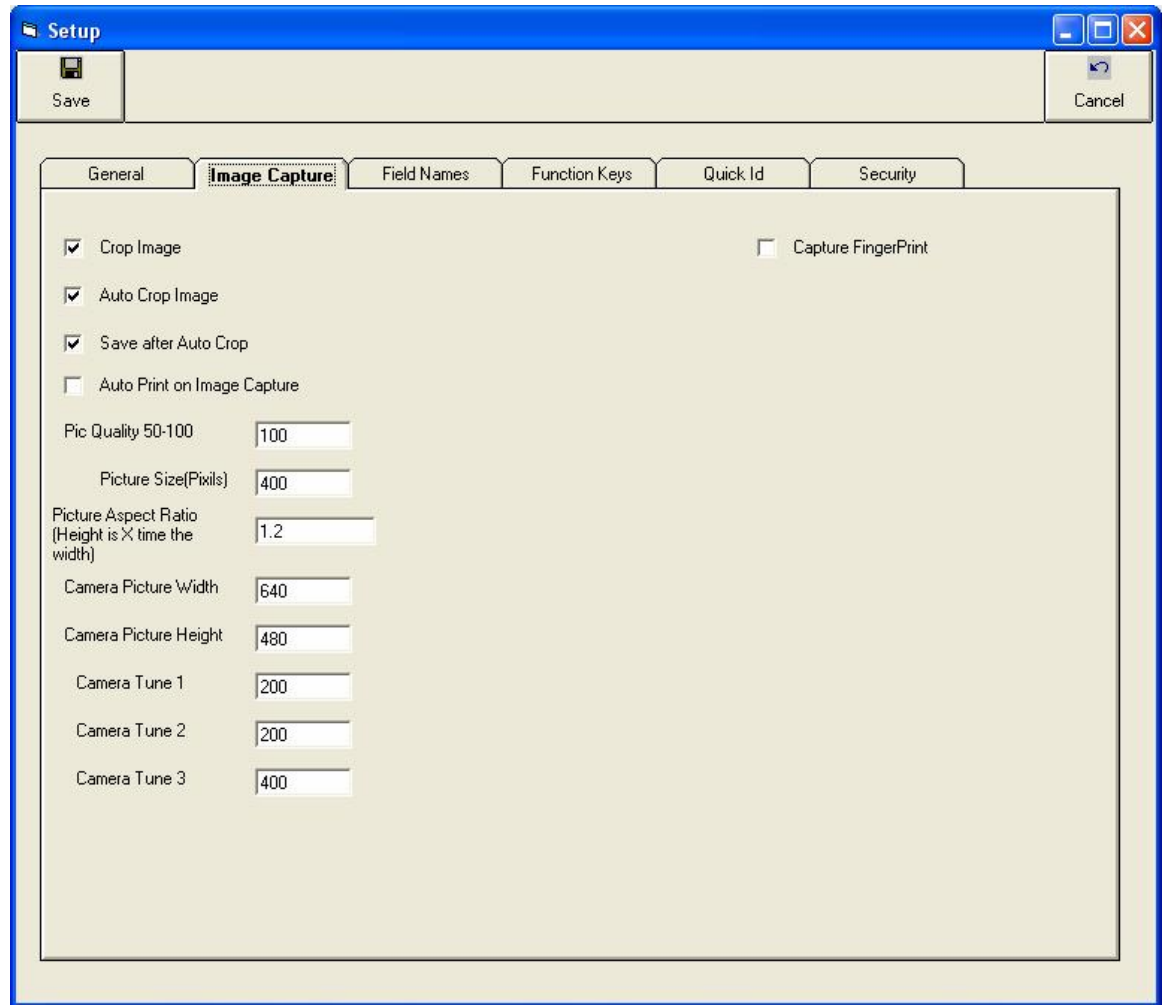
\*\* Note: On Windows 2000, Windows Media Player will be installed after the bundled software is installed. Make sure if you are running Windows 2000, you wait for the Windows Media Player installation to finish.

Note: Veo Creative Studio must have DirectX Installed to operate properly(pre-installed in Windows XP). You will be prompted in install DirectX upon initial use of the Creative Studio software. Please install and restart your computer to complete the installation.

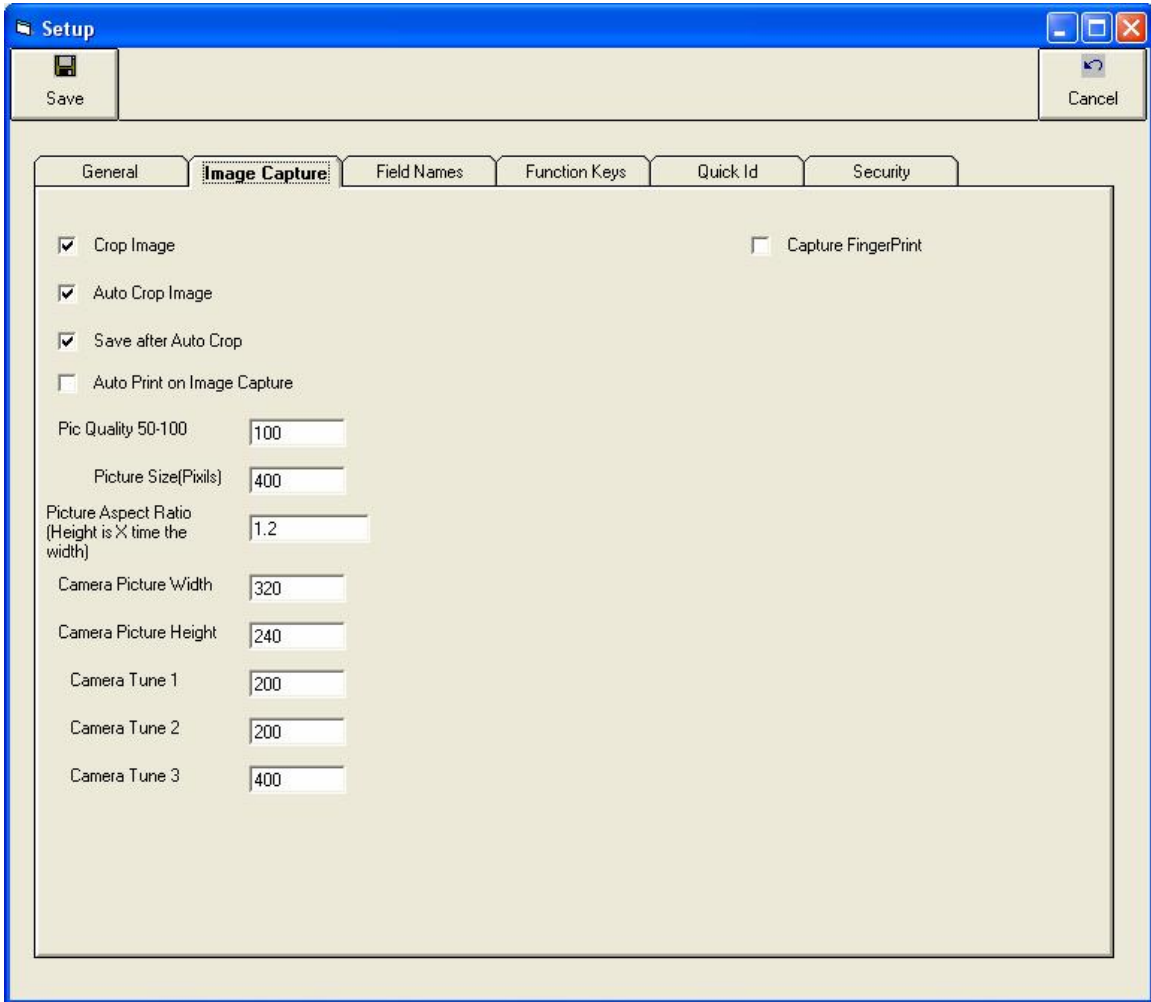
After the camera installation is complete. Check the following setup in the Time Saver Id software.

- 1) Click on the settings button.
- 2) Click on the Image Tab.

3) If your camera and computer support at least 640x480\* resolution use the following parameters.



If your camera use less than 640x480\*, use the following settings.



\* To verify the camera resolutions, Go to Card Holder, Select and Individual and left click on the photo layout. When then camera screen appears, click on the control pull down menu, and select format. Click the down arrow on the resolution, Select 640x480\*\* if it is in the list, otherwise select 320x240. You may also want to change then Pixel Depth and compression: You may have several options hers. Select the one that gives you the largest file size.

\*\* WARNING! Some cameras will show a 640x480 options even when the camera is actually a 320x240 camera. Selecting 640x480 in this instance will cause the photo to be grainy.